

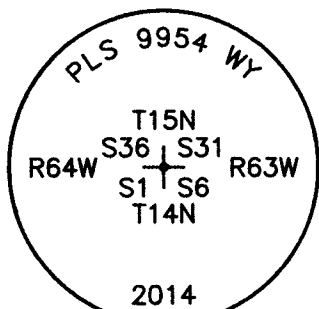
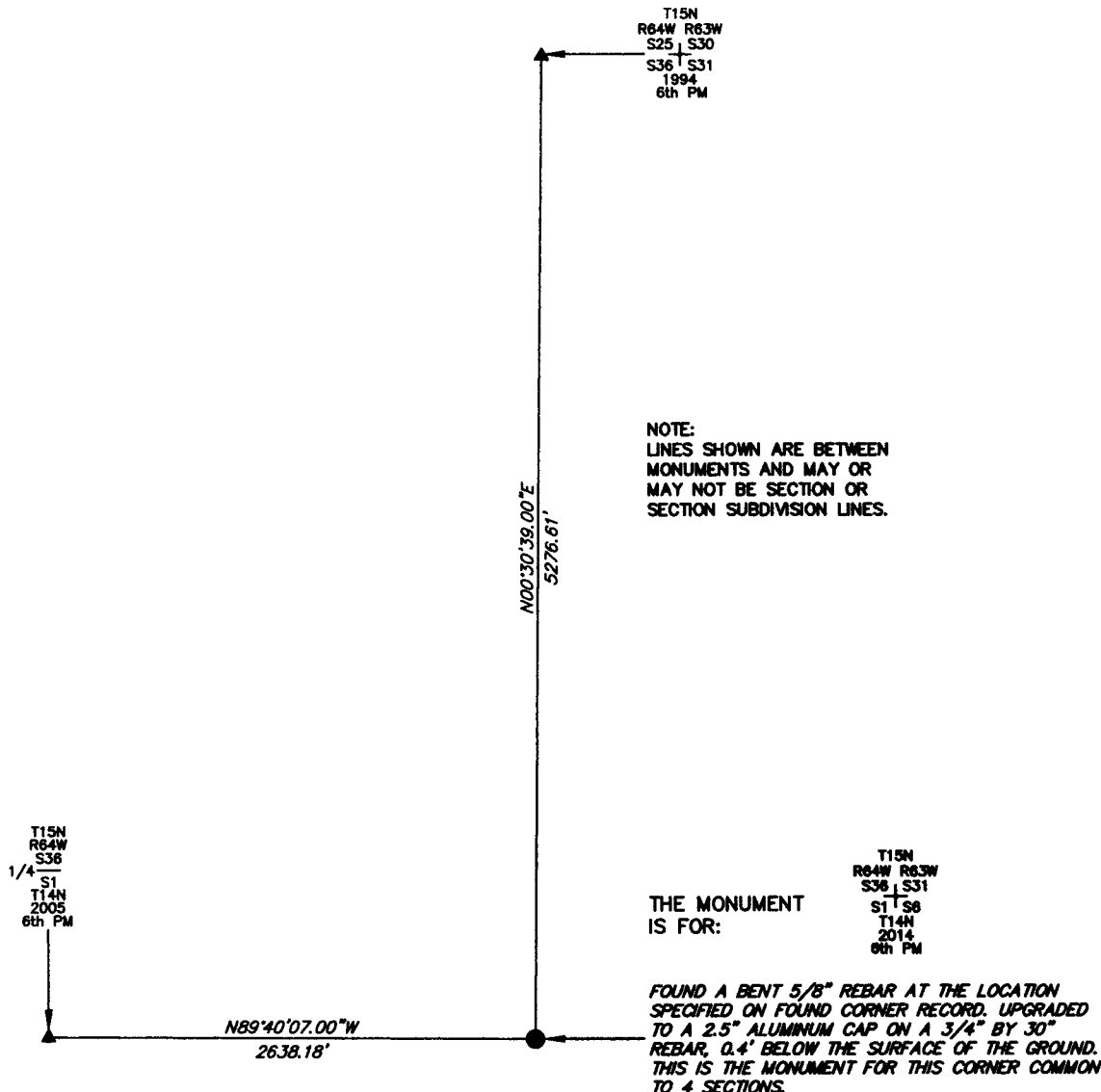
State of Wyoming Corner Record

CORNER PERPETUATION AND FILING ACT.

Regulations of the Board of Registration for Professional Engineers and Land Surveyors.)

Reverse side of this form may be used if more space is needed.

Record of original survey and citation of source of historic information (if corner is lost or obliterated). Description of corner monumentation evidence found and/or monument and accessories established to perpetuate the location of this corner. Sketch of relative location of monument, accessories, and reference points with course and distance to adjacent corner(s) (if determined in this survey). Method and rationale for reestablishment of lost or obliterated corner.



- CORNER MONUMENT SYMBOLS**
- RECORD IS FOR THIS CORNER MONUMENT.
 - ▲ A RELATED CORNER OR WC MONUMENT.

SCALE 1"=1000'
(EXCEPT IN TRIVIAL CASES)
BEARINGS ARE RELATED TO WGS 84 WITH GPS OBSERVATIONS
DRAWN BY: SM
P.C. B. LOWREY
COUNTY: LARAMIE

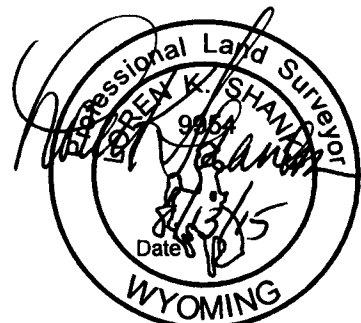
Date of Field Work: 10/08/2014 Office Reference: _____

CROSS INDEX DIAGRAM

A	1	2	3	4	5	6	7	8	9	10	11	12	13	14	15	16	17	18	19	20	21	22	23	24	25
B																									
C		6			5				4					3					2						
D																									
E																									
F																									
G		7			8				9					10					11						
H																									
J																									
K																									
L		18			17				16					15					14						
M																									
N																									
O																									
P		19			20				21					22					23						
Q																									
R																									
S																									
T		30			29				28					27					26						
U																									
V																									
W																									
X		31			32				33					34					35						
Y																									
Z	1	2	3	4	5	6	7	8	9	10	11	12	13	14	15	16	17	18	19	20	21	22	23	24	25

Firm/Agency, Address
UELS, LLC
 85 South 200 East
 Vernal, Utah 84078
 Telephone Number: 435-789-1017

This corner record was prepared by me or under my direction and supervision.
SEAL & SIGNATURE



RECP #: 670106
 RECORDED 9/22/2015 AT 10:42 AM BK# 2465 PG# 114
 Debra K. Lathrop, CLERK OF LARAMIE COUNTY, WY PAGE 1 OF 1